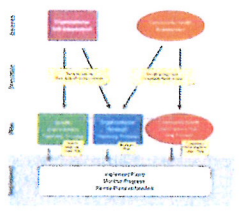


# THE FIVE PARTS OF LOCAL PUBLIC HEALTH ASSESSMENT AND PLANNING

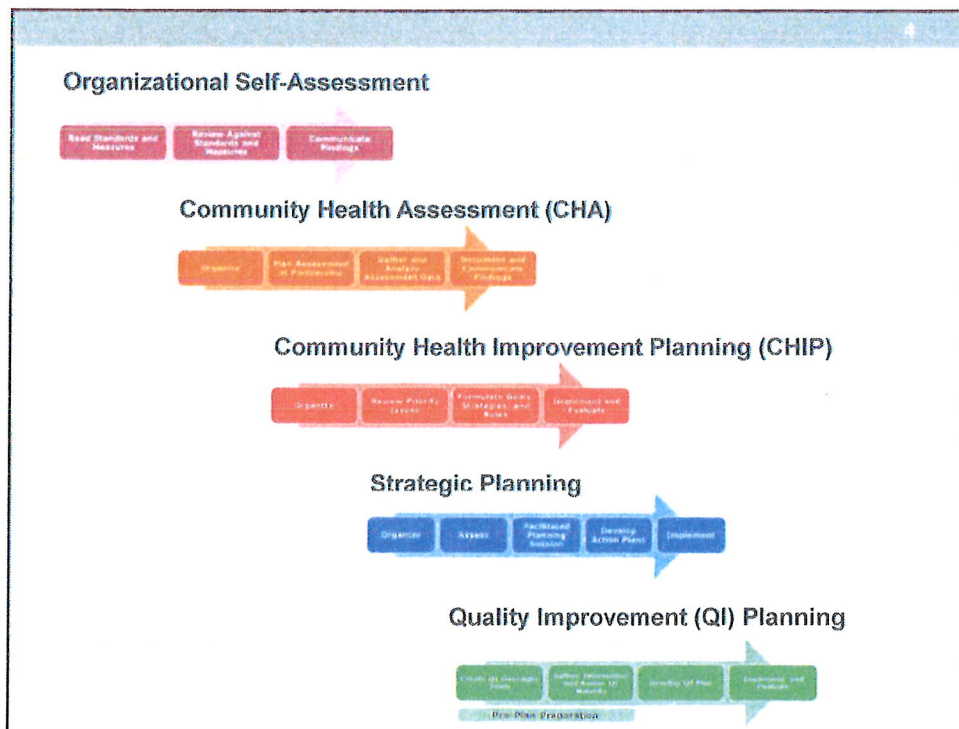
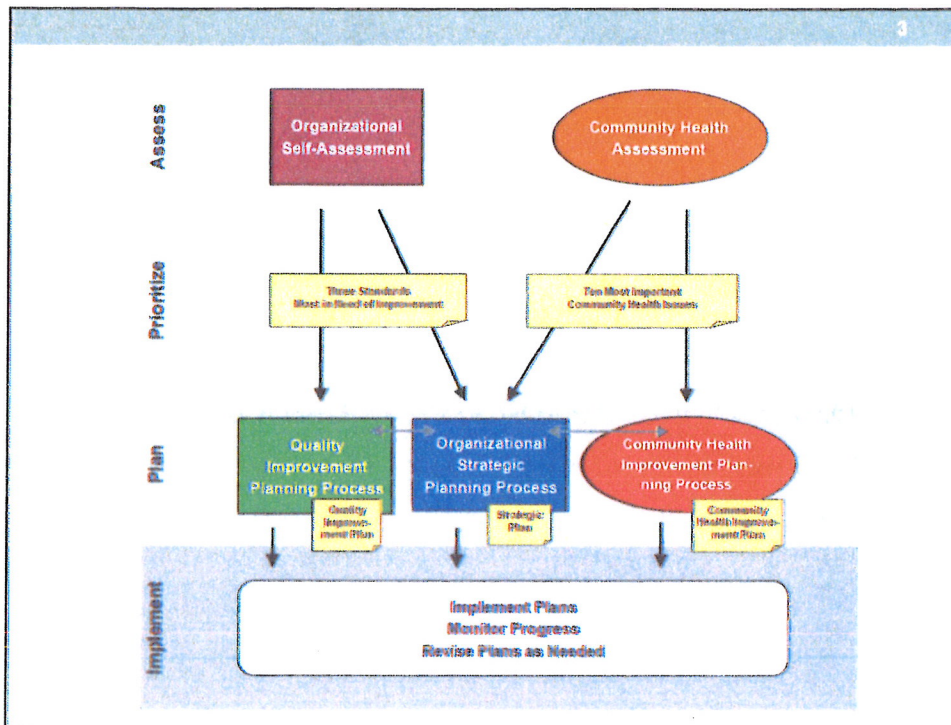
Reporting Period: January 1, 2010 – December 31, 2014

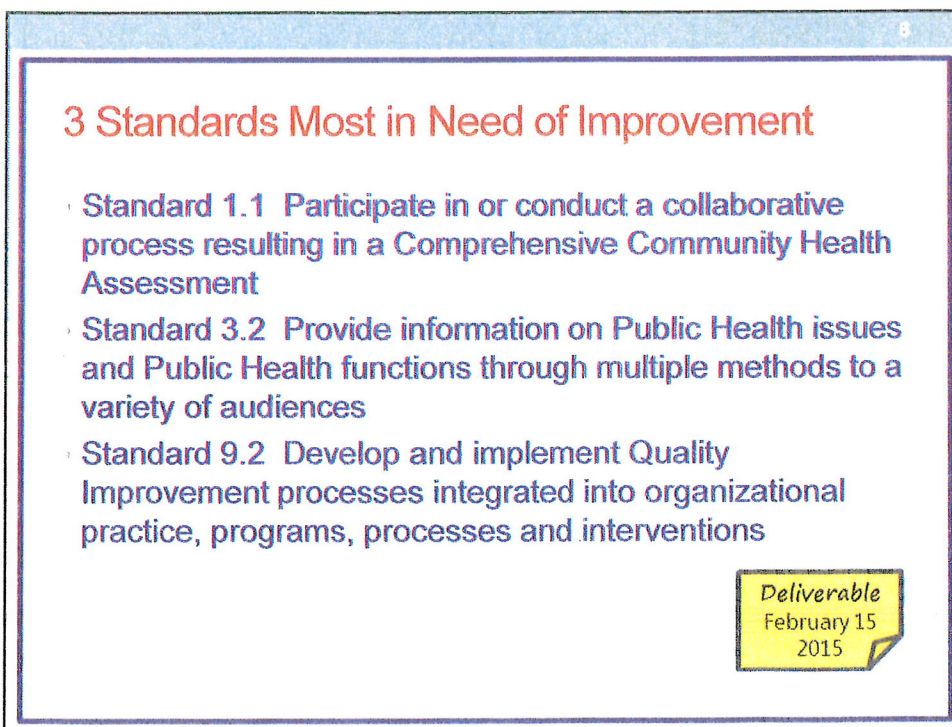


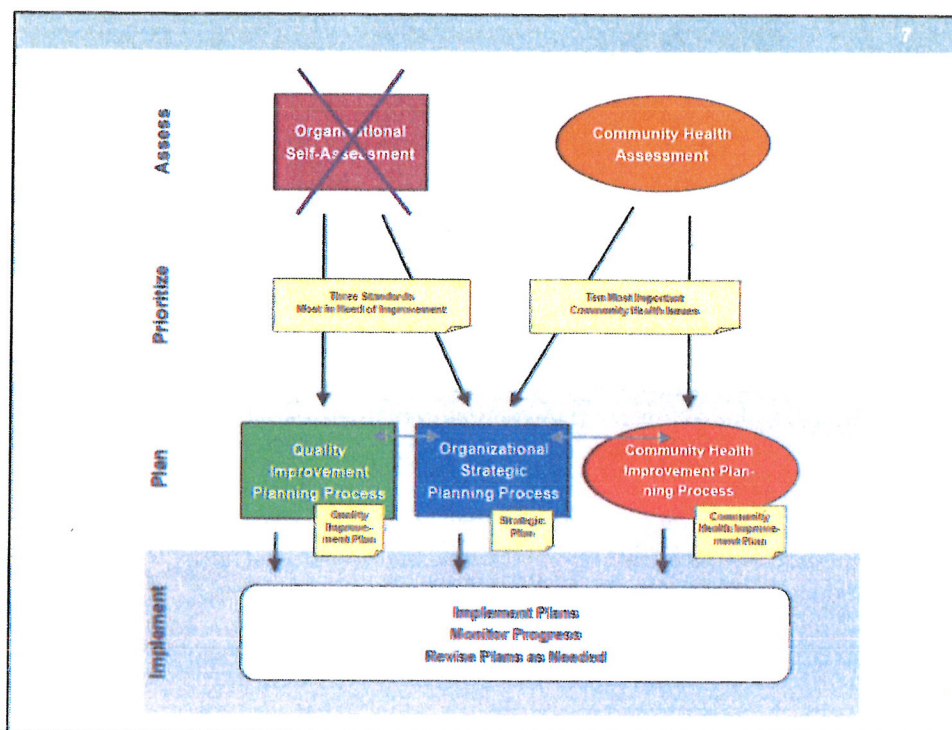
## Alphabet Soup



- LPH—Local Public Health
- LPHAPP—Local Public Health Assessment and Planning Process
- PHAB—Public Health Accreditation Board
- CHB—Community Health Board
- CHS—Community Health Services
- CHA—Community Health Assessment
- MDH—Minnesota Department of Health
- Triad—Aitkin-Itasca-Koochiching CHS
- CHIP—Community Health Improvement Plan
- QI—Quality Improvement







## About: Community Health Assessment (CHA)

### WHAT:

- Collecting, analyzing and using data to educate and mobilize communities, develop priorities, garner resources and plan actions to improve public health; and
- The systematic collection and analysis of data in order to provide a basis for decision making

### PURPOSE:

- Provides a foundation
- Identifies factors
- Describes
- Assures

8

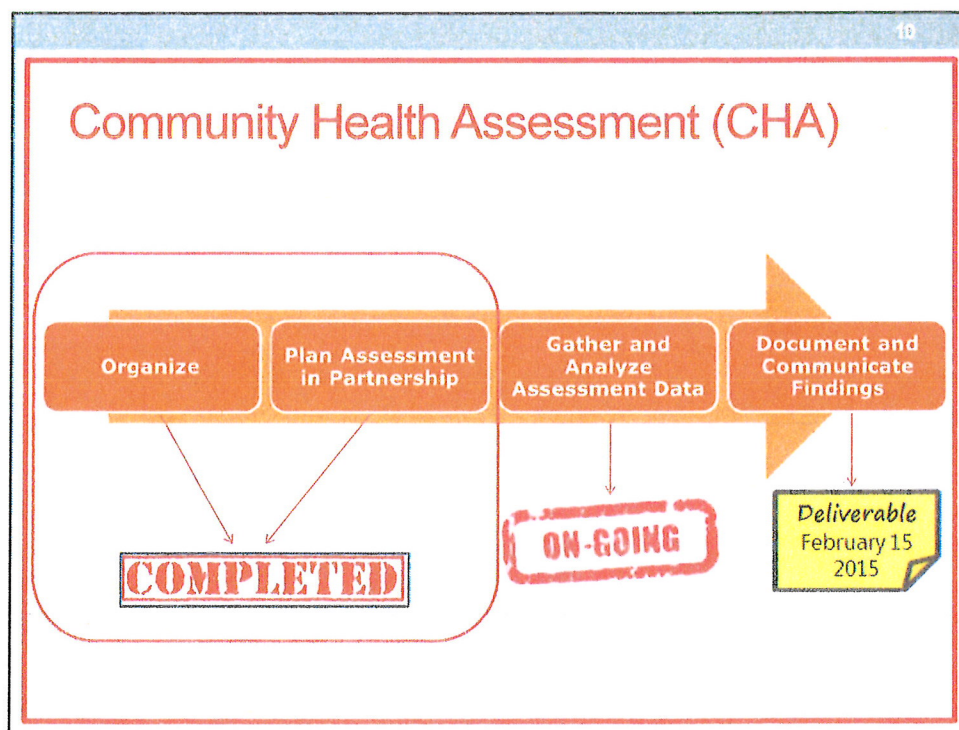
## About: Community Health Assessment (CHA)

PARTICIPANTS:

- Community
- Broad Participation

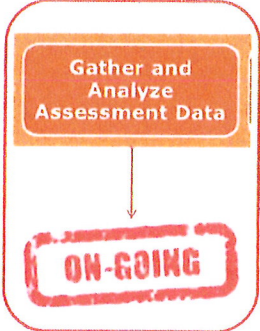
AREA:

- Geographic Areas



11

## Community Health Assessment (CHA)

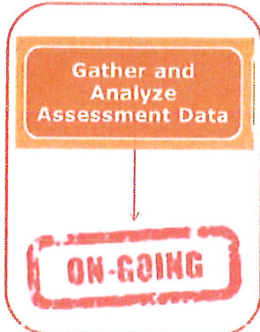


A flowchart with a blue box containing the text "Gather and Analyze Assessment Data". A downward arrow points from this box to a red stamp-like box containing the text "ON-GOING".

- › **People and Place**
  - Population by age, race, ethnicity, etc.
  - Birth and death rates
  - Children under 18 living in single parent households
  - Percentage of households with residents 65+ living alone
  - Etc.

12

## Community Health Assessment (CHA)

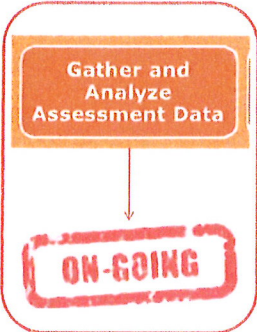


A flowchart with a blue box containing the text "Gather and Analyze Assessment Data". A downward arrow points from this box to a red stamp-like box containing the text "ON-GOING".

- › **Healthy Living**
  - Prenatal Care
  - Alcohol, tobacco and other drug use
  - Physical activity
  - Consumption of healthy or unhealthy foods
  - Etc.

13

## Community Health Assessment (CHA)



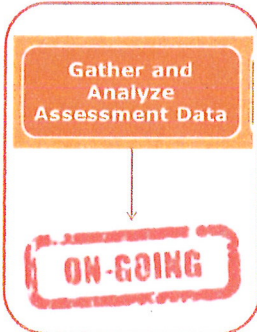
**Gather and Analyze Assessment Data**

**ON-GOING**

- ▶ **Opportunity for Health**
  - ▶ Food support program eligibility/utilization
  - ▶ High school graduation rate
  - ▶ Unemployment rate
  - ▶ Wellness screening rate
  - ▶ Uninsured adult rate
  - ▶ Medical/dentist/mental health practitioner to population ratios
  - ▶ Etc.

14

## Community Health Assessment (CHA)



**Gather and Analyze Assessment Data**

**ON-GOING**

- ▶ **Disease and Injury**
  - ▶ Leading causes of death
  - ▶ Overweight and obesity rates
  - ▶ Prevalence of asthma, diabetes, depression and other chronic diseases
  - ▶ Etc.

## Aitkin County Community Health Summit



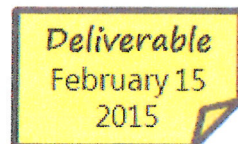
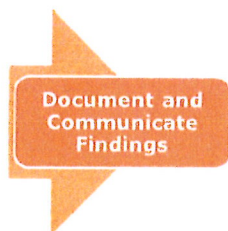
**Public Health**  
Prevent. Promote. Protect.

### **YOU** are Invited!

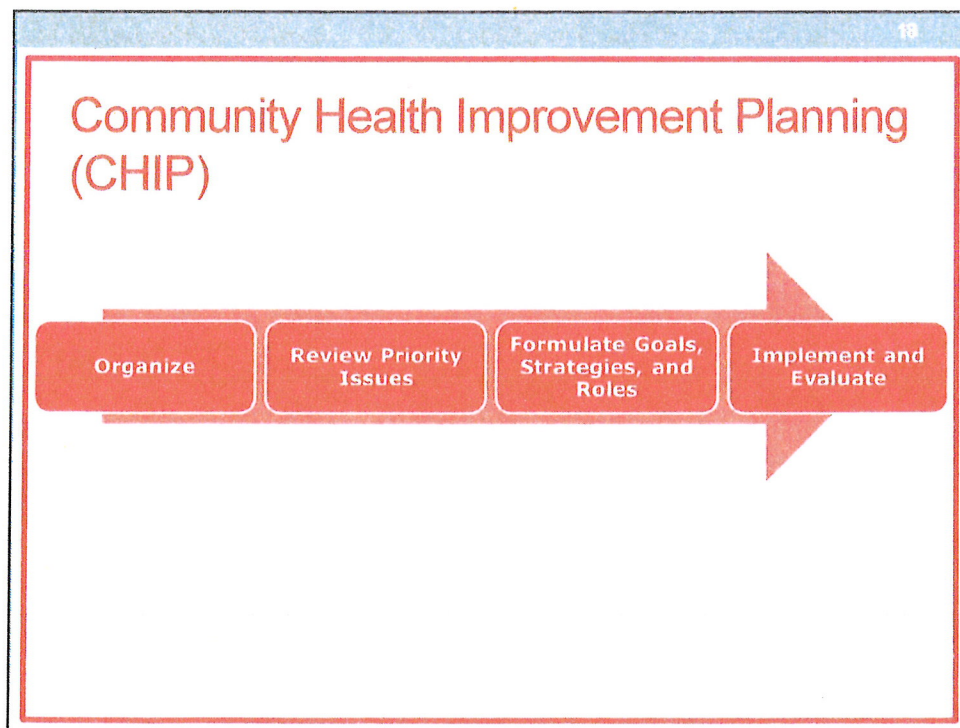
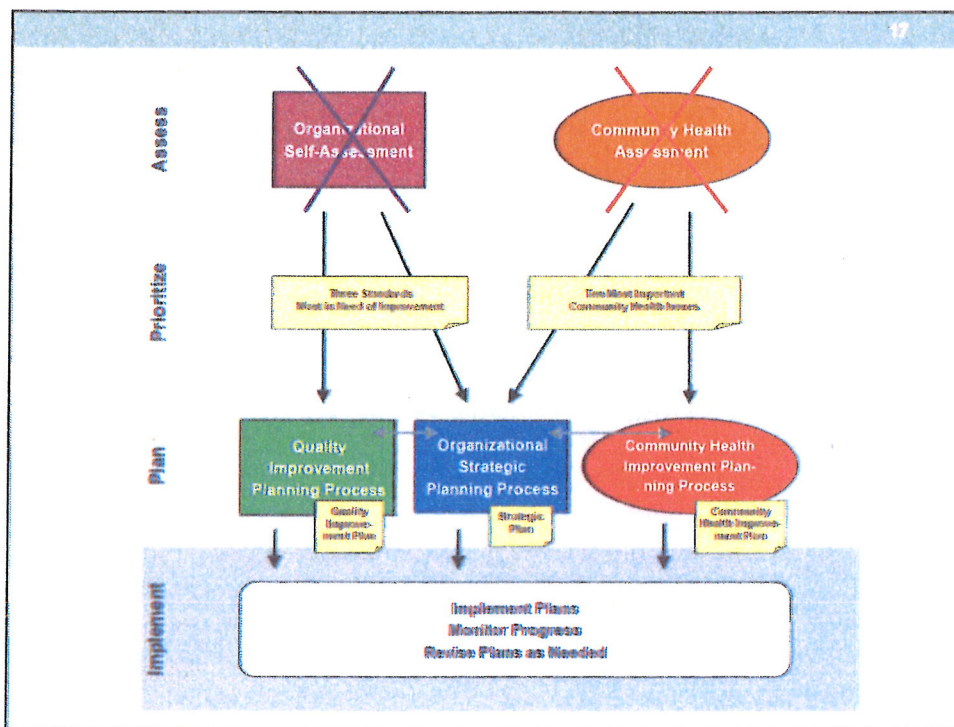
- When: Monday, June 9, 2014
- Where: Long Lake Conservation Center
- Time: Registration at 8:15 a.m. until approximately 2:00 p.m.
- Continental Breakfast and Lunch PROVIDED!
- Bring a friend!

## 10 Most Important Community Health Issues

- Outcome of Community Health Assessments
- Determined at CHB level



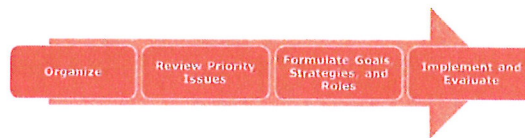




19

## Good Public Health Practice

- Systems thinking and strategic planning
- Shared community vision for health
- Opportunities for community leadership
- Partnerships, collaboration and dialogue
- Effective use of data and experience



20

## Community Health Improvement Plan (CHIP)

- Descriptions of health inequities
- List of issues and themes identified by stakeholders
- Prioritization process used
- Top community health needs or priorities
- Justification for why each issue is a priority

